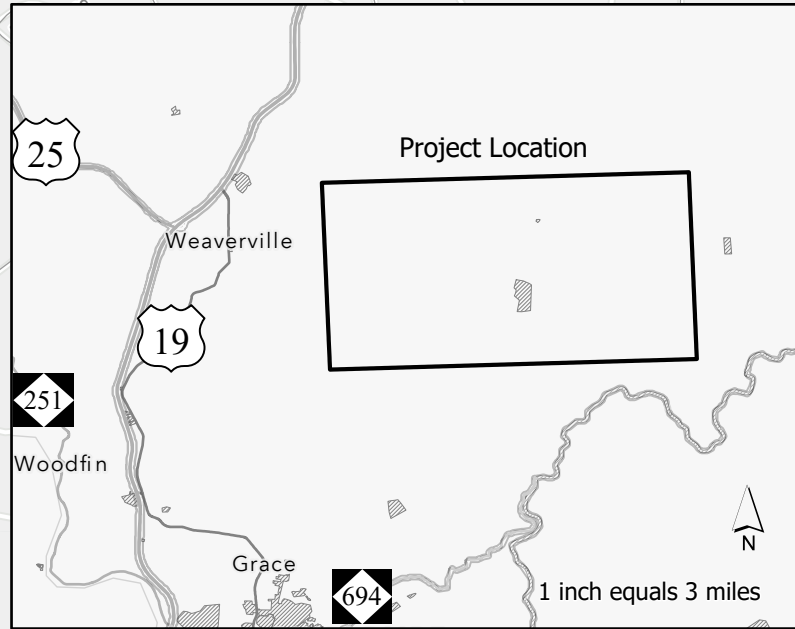
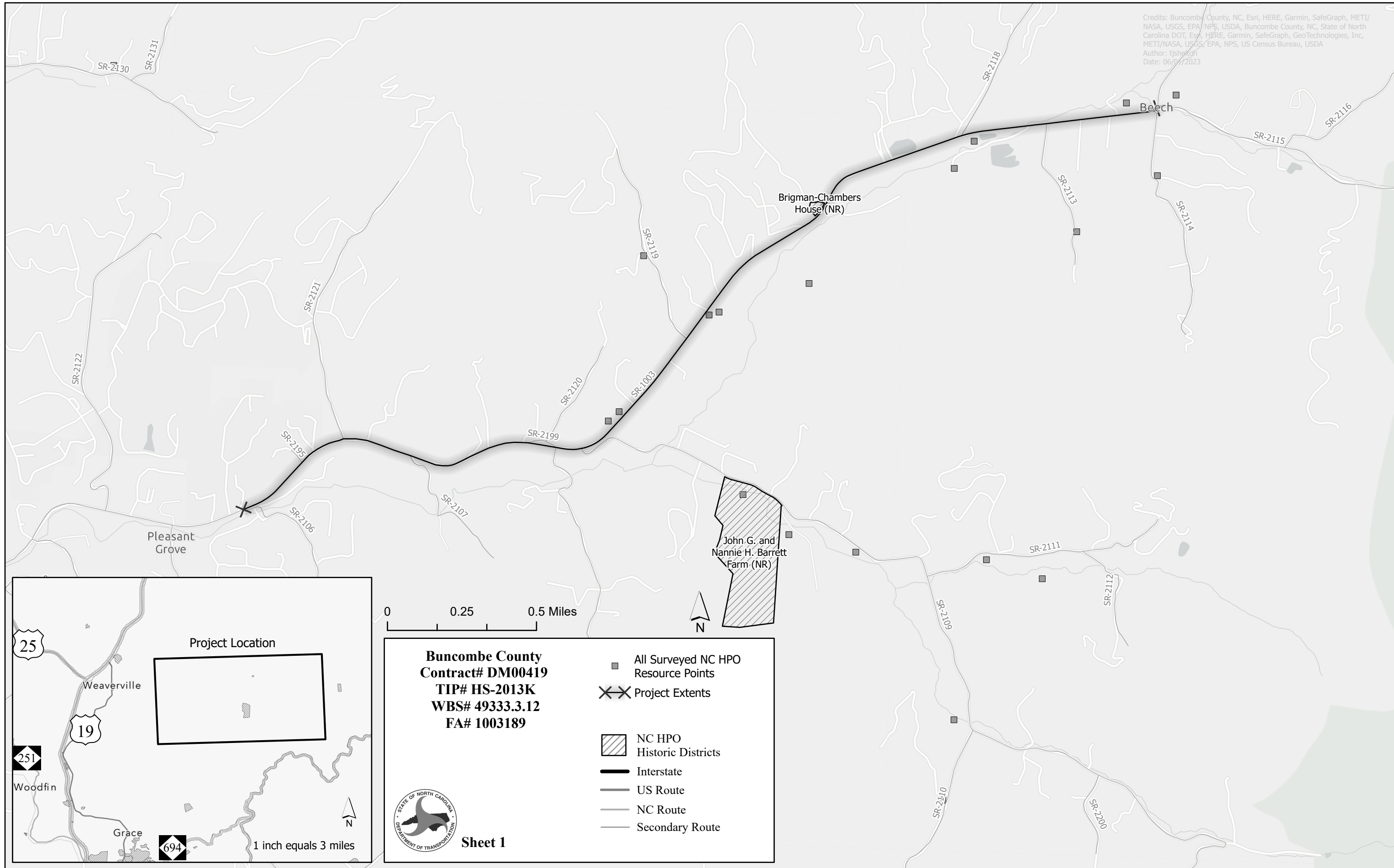



Credits: Buncombe County, NC, Esri, HERE, Garmin, SafeGraph, METI/
 NASA, USGS, EPA, NPS, USDA, Buncombe County, NC, State of North
 Carolina DOT, Esri, HERE, Garmin, SafeGraph, GeoTechnologies, Inc,
 METI/NASA, USGS, EPA, NPS, US Census Bureau, USDA
 Author: tjshton
 Date: 06/07/2023



Buncombe County
Contract# DM00419
TIP# HS-2013K
WBS# 49333.3.12
FA# 1003189

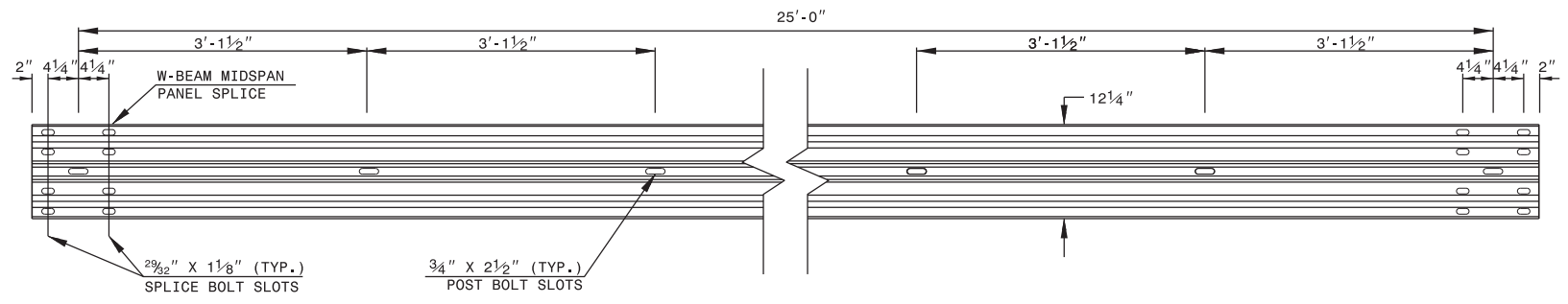
- All Surveyed NC HPO Resource Points
- ✕✕ Project Extents
- ▨ NC HPO Historic Districts
- Interstate
- US Route
- NC Route
- Secondary Route

 **Sheet 1**

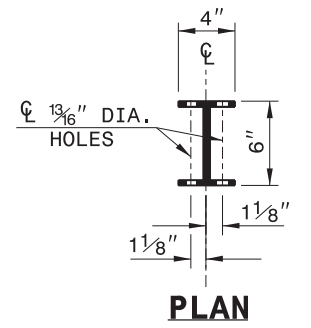
STATE OF NORTH CAROLINA
DEPT. OF TRANSPORTATION
DIVISION OF HIGHWAYS
RALEIGH, N.C.

ROADWAY DETAIL DRAWING FOR
GUARDRAIL INSTALLATION

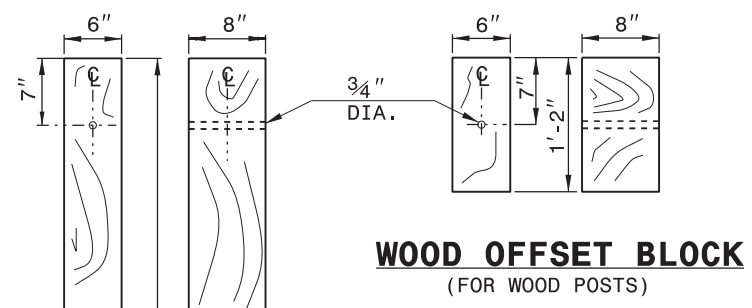
SHEET 6 OF 8
862D02



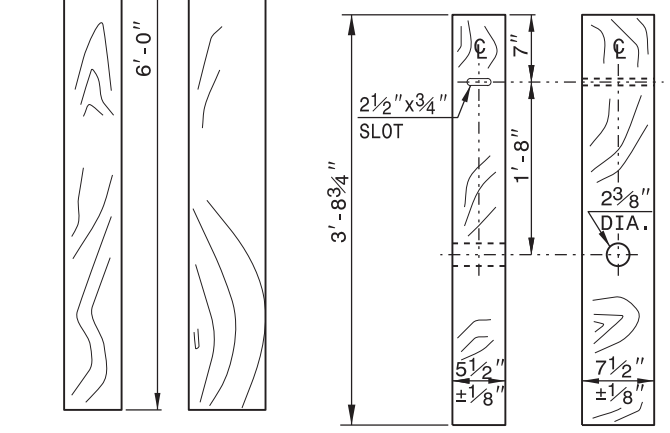
STANDARD W-BEAM GUARDRAIL



PLAN

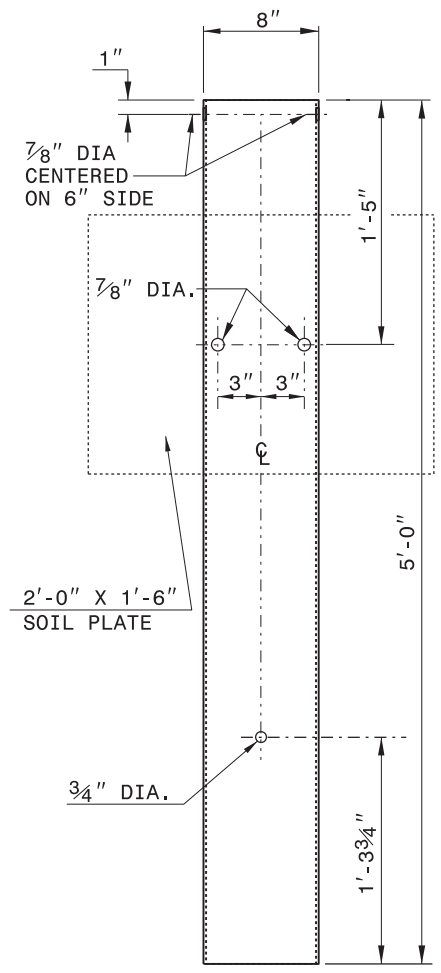


**WOOD OFFSET BLOCK
(FOR WOOD POSTS)**

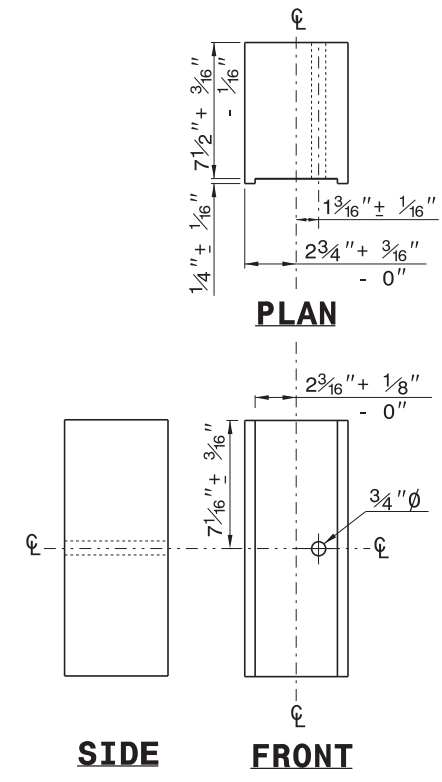


**STANDARD
LINE POST**

**SHORT WOOD
BREAKAWAY POST**



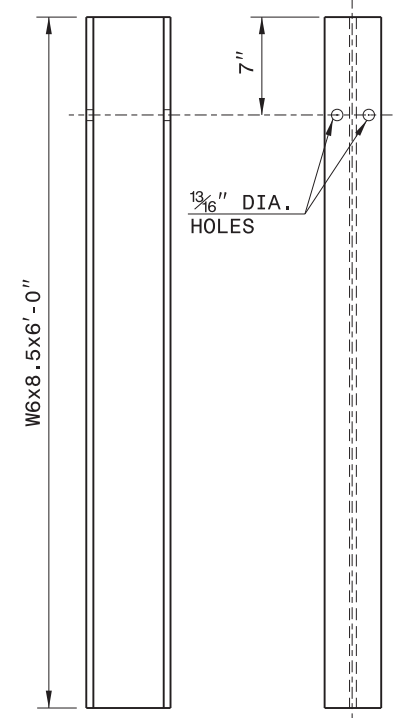
**STEEL TUBE
TS 6"x8"x0.1875"**



SIDE

FRONT

**ROUTED
OFFSET BLOCK**



SIDE

FRONT

"W6" STEEL POST

SYSTEM PARTS

STATE OF NORTH CAROLINA
DEPT. OF TRANSPORTATION
DIVISION OF HIGHWAYS
RALEIGH, N.C.

ROADWAY DETAIL DRAWING FOR
GUARDRAIL INSTALLATION

SHEET 6 OF 8
862D02



**CONTRACTS STANDARDS
AND DEVELOPMENT UNIT**
Office 919-707-6950 FAX 919-250-4119

SEE TITLE BLOCK

ORIGINAL BY: J. HOWERTON DATE: 3-7-2018
MODIFIED BY: DATE: _____
CHECKED BY: DATE: _____
FILE SPEC.: _____

STATE OF
NORTH CAROLINA
DEPT. OF TRANSPORTATION
DIVISION OF HIGHWAYS
RALEIGH, N.C.

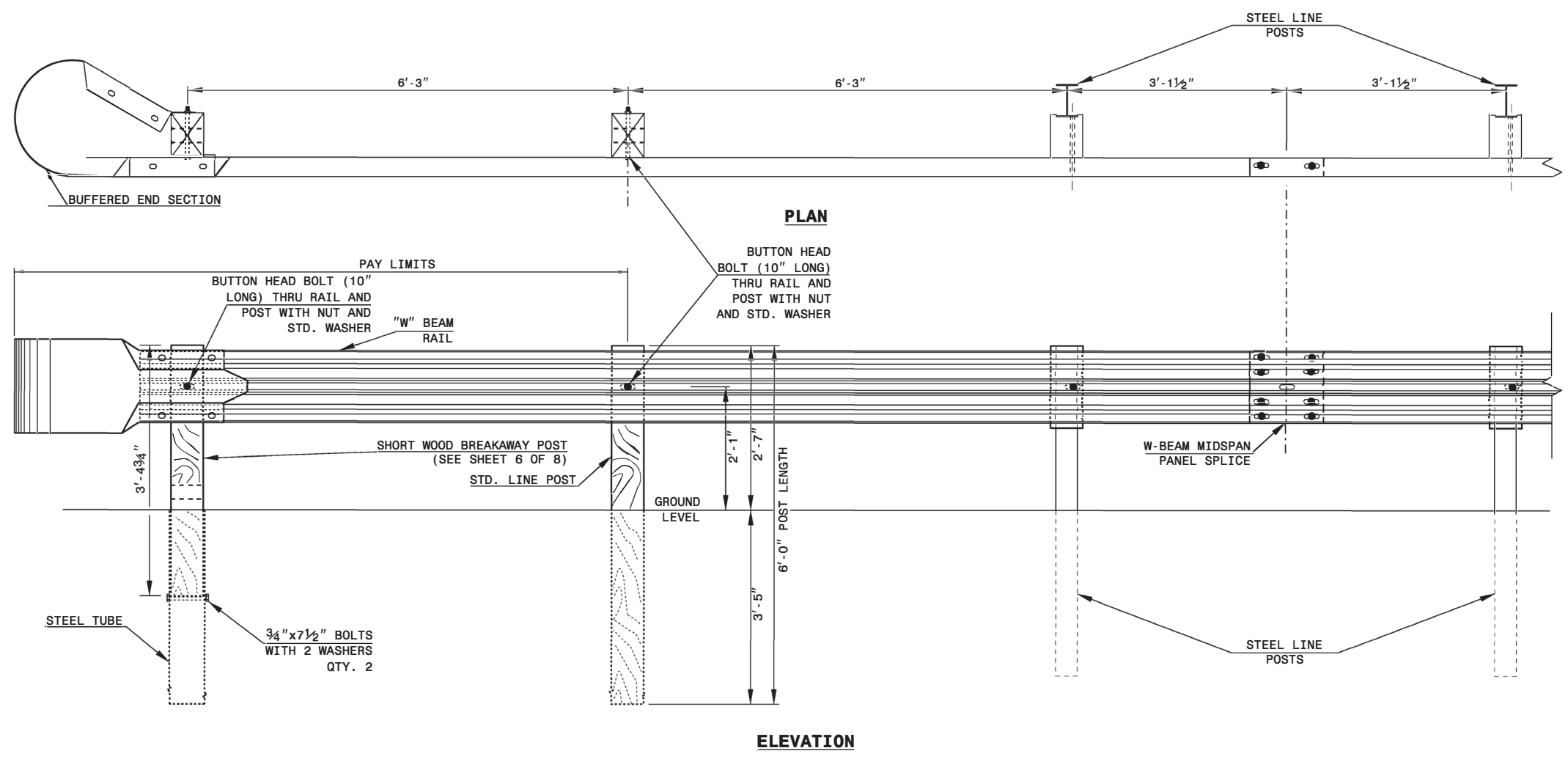
ROADWAY DETAIL DRAWING FOR
GUARDRAIL INSTALLATION

SHEET OF

STATE OF
NORTH CAROLINA
DEPT. OF TRANSPORTATION
DIVISION OF HIGHWAYS
RALEIGH, N.C.

ROADWAY DETAIL DRAWING FOR
GUARDRAIL INSTALLATION

SHEET OF



TRAILING END UNIT ASSEMBLY
A.T.-1 SYSTEM



DOCUMENT NOT CONSIDERED FINAL
UNLESS ALL SIGNATURES COMPLETED

**CONTRACTS STANDARDS
AND DEVELOPMENT UNIT**
Office 919-707-6950 FAX 919-250-4119

A.T.-1 SYSTEM

ORIGINAL BY: _____ DATE: _____
MODIFIED BY: _____ DATE: _____
CHECKED BY: _____ DATE: _____
FILE SPEC.: _____

PROJECT NO.	SHEET NO.
49333.3.12	4

GUARDRAIL ITEM SUMMARY

LOCATION NO	ROUTE	DESCRIPTION	SHOULDER LT/RT	303000000-E	304500000-E	314500000-E	319500000-N	328700000-N	336000000-E	343500000-N	NOTES
				STEEL BEAM GUARDRAIL	STEEL BM GUARDRAIL, SHOP CURVED	EXTRA LENGTH GUARDRAIL POST (8' STEEL)	GUARDRAIL END UNITS, TYPE AT-1	GUARDRAIL END UNITS, TYPE TL-3	REMOVE EXISTING GUARDRAIL	GUARDRAIL POST BOX CULVERT ANCHOR UNIT	
				LF	LF	EA	EA	EA	LF	EA	
1	SR-1003 (Reems Creek Rd)	APPROXIMATELY 3.61 MILES FROM US 19 BUS (MERRIMON AVE) (MP 3.61 - 3.64)	RT	180				2	180		Remove and replace existing
2	SR-1003 (Reems Creek Rd)	APPROXIMATELY 3.60 MILES FROM US 19 BUS (MERRIMON AVE) (MP 3.60 - 3.64)	LT	225				2	225		Remove and replace existing
3	SR-1003 (Reems Creek Rd)	APPROXIMATELY 3.73 MILES FROM US 19 BUS (MERRIMON AVE) (MP 3.73 - 3.77)	LT	205				2	180		Remove and replace existing
4	SR-1003 (Reems Creek Rd)	APPROXIMATELY 3.75 MILES FROM US 19 BUS (MERRIMON AVE) (MP 3.75 - 3.88)	RT	675	50			2	655		Remove and replace existing
5	SR-1003 (Reems Creek Rd)	APPROXIMATELY 3.92 MILES FROM US 19 BUS (MERRIMON AVE) (MP 3.92 - 3.6496)	RT	225				2	225		Remove and replace existing
6	SR-1003 (Reems Creek Rd)	APPROXIMATELY 4.05 MILES FROM US 19 BUS (MERRIMON AVE) (MP 4.05 - 4.14)	RT	475				2	375		Remove and replace existing
7	SR-1003 (Reems Creek Rd)	APPROXIMATELY 4.15 MILES FROM US 19 BUS (MERRIMON AVE) (MP 4.15 - 4.18)	RT	145	12.5			2			New installation
8	SR-1003 (Reems Creek Rd)	APPROXIMATELY 4.20 MILES FROM US 19 BUS (MERRIMON AVE) (MP 4.20 - 4.26)	RT	315	25			2			New installation
9	SR-1003 (Reems Creek Rd)	APPROXIMATELY 4.28 MILES FROM US 19 BUS (MERRIMON AVE) (MP 4.28 - 4.41)	RT	600	62.5			2	675		Remove and replace existing
10	SR-1003 (Reems Creek Rd)	APPROXIMATELY 5.37 MILES FROM US 19 BUS (MERRIMON AVE) (MP 5.37 - 5.42)	RT	250	25	2		2	250		Remove and replace existing
11	SR-1003 (Reems Creek Rd)	APPROXIMATELY 5.42 MILES FROM US 19 BUS (MERRIMON AVE) (MP 5.42 - 5.55)	RT	675	25	3		2	650		Remove and replace existing
12	SR-1003 (Reems Creek Rd)	APPROXIMATELY 5.56 MILES FROM US 19 BUS (MERRIMON AVE) (MP 5.56 - 5.68)	RT	650	25			2	630		Remove and replace existing
13	SR-1003 (Reems Creek Rd)	APPROXIMATELY 5.97 MILES FROM US 19 BUS (MERRIMON AVE) (MP 5.97 - 6.02)	LT	250				2			New installation
14	SR-1003 (Reems Creek Rd)	APPROXIMATELY 6.03 MILES FROM US 19 BUS (MERRIMON AVE) (MP 6.03 - 6.12)	LT	500				2			New installation
15	SR-1003 (Reems Creek Rd)	APPROXIMATELY 6.40 MILES FROM US 19 BUS (MERRIMON AVE) (MP 6.40 - 6.42)	RT	100	25		1	1		8	New installation
16	SR-1003 (Reems Creek Rd)	APPROXIMATELY 6.41 MILES FROM US 19 BUS (MERRIMON AVE) (MP 6.41 - 6.43)	LT	100	25		1	1		8	New installation
GRAND TOTAL				5,570	275	5	2	30	4,045	16	

NOTES: QUANTITIES ARE ESTIMATED AND MAY CHANGE ACCORDING TO ACTUAL FIELD CONDITIONS.
THE ENGINEER SHALL FIELD MARK ALL PROPOSED GUARDRAIL AND END UNITS PRIOR TO BEGINNING CONSTRUCTION AT EACH LOCATION.

INSTALL EXTRA LENGTH GUARDRAIL POSTS ACCORDING TO FIELD CONDITIONS AND AS DIRECTED BY THE ENGINEER.